

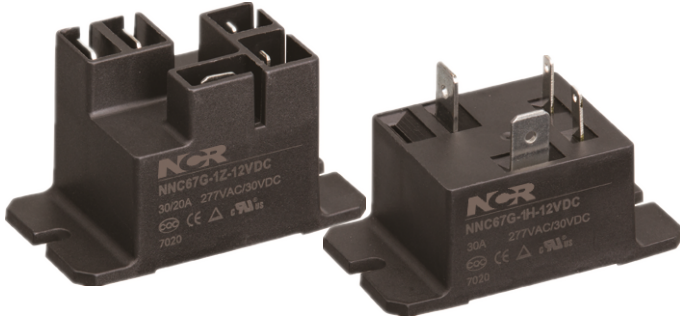


Industrial & Electrical Components

PCB Relay

Part No.

NRP17



- High switching capacity-30A for 1 Form A
- Reliable Contacting
- Sealed type available
- UL/C-UL recognized

CONTACT

Arrangement	1A/1B/1C
Contact Material	Silver Alloy
Contact Resistance (By voltage drop 6V 1A)	Max. 100mΩ
Rating	1A: 30A 240VAC/28VDC
Resistive load (Cos.Φ=1)	1B: 20A 240VAC/28VDC 1C: 20A 240VAC/28VDC
Max. Allowable Voltage	28VDC 240VAC
Max. Allowable Current	30A
Atmospheric pressure	86-106KPa
Service life	
Electrical	1 X 10 ⁵
Mechanical	1 X 10 ⁷

CHARACTERISTICS

Operate Time	15ms.Max.
Release Time	10ms. Max.
Initial breakdown voltage	
Between coil & contact	2500VAC (50/60Hz) for 1 Min.
Between open contacts	1800VAC (50/60Hz) for 1 Min.
Insulation Resistance	Min.100MΩ (500 VDC)
Ambient temperature	-55°C ~+70°C
Humidity	40~85%
Shock	Endurance 10G
Resistance	Damage 100G
Vibration	Functional 10 to 55 Hz D.A. of 1.5mm
Resistance	Destruction 10 to 55 Hz D.A. of 1.5mm
Unit weight	30g Max.

ORDERING INFORMATION

e.g

NRP - 17 - C - 12D

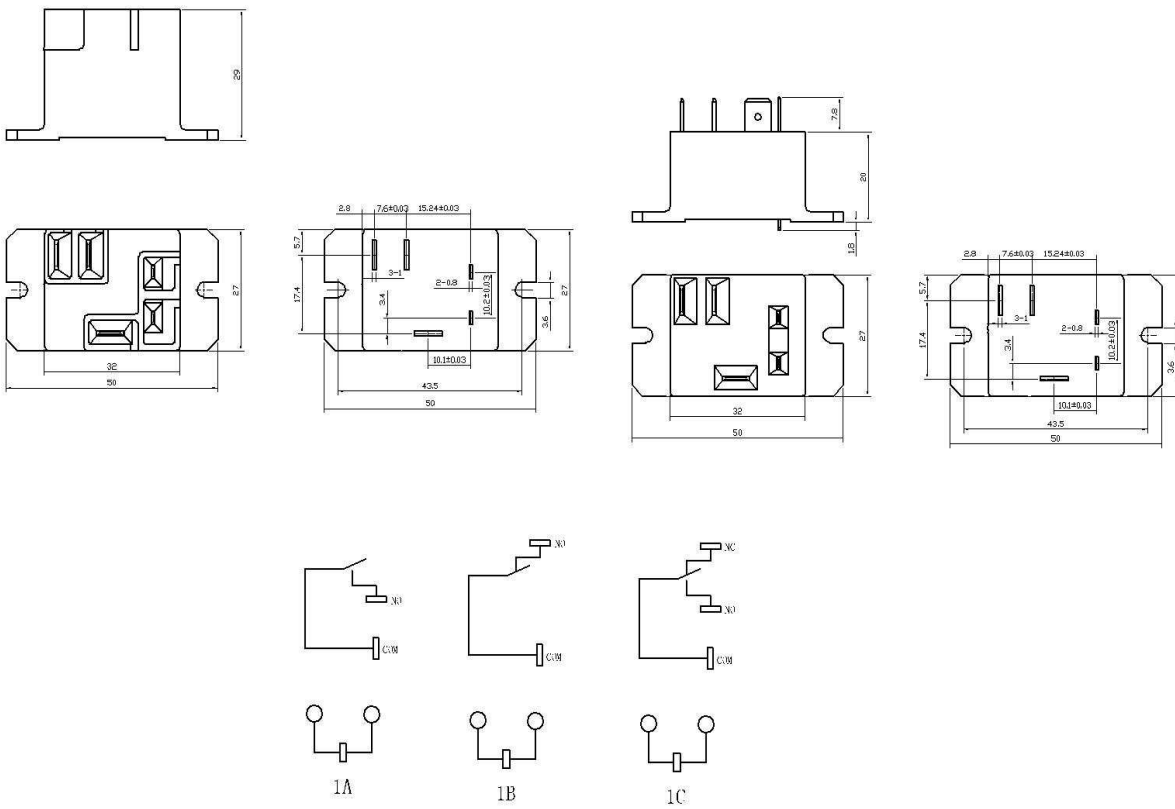
- ① ② ③ ④

- ① Series: Miniature Pcb Relay Series
 ② Part No.
 ③ Contact Form: C=1C/O; A = N/O; B= N/C
 ④ Coil Voltage: 12D=12Vdc 24D=24Vdc

COIL DATA (at 23°C)

Nominal Voltage (VDC)	Pick-up Voltage VDC(Max)	Drop-out Voltage VDC(Min)	Resistance (Ω) \pm 10%	operating (W)	Max.Allowable Voltage
5	3.75	0.50	26.9	0.93	110% apply to nominal Voltage
6	4.50	0.60	38.8		
9	6.75	0.90	87.1		
12	9.00	1.20	154.9		
24	18.00	2.40	619.4		
48	36.00	4.80	2477.5		

DIMENSIONS (Unit: mm)



Industrial & Electrical Components